

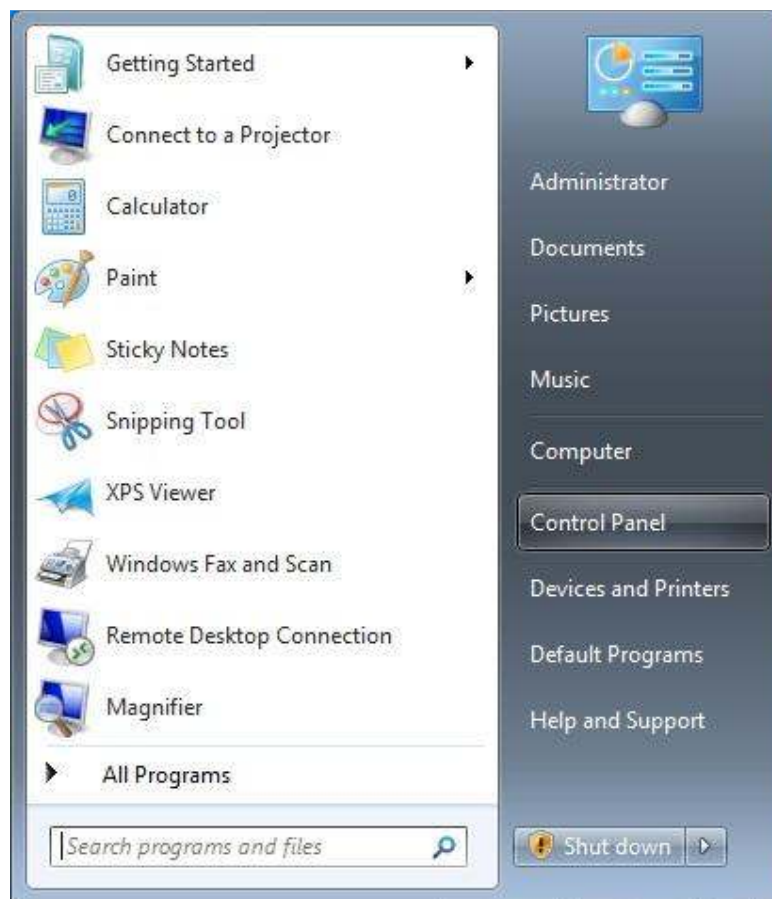
Netrust Digital Signer 3.0	Version: 1.0
	Issue Date: 3 th March 2013



Netrust Pte Ltd

How to Check if you have Java Installed in your Machine?

- 1) You can visit the Java Website at www.java.com or search the web for www.java.com/verify/
- 2) First go to the Control Panel under the start menu

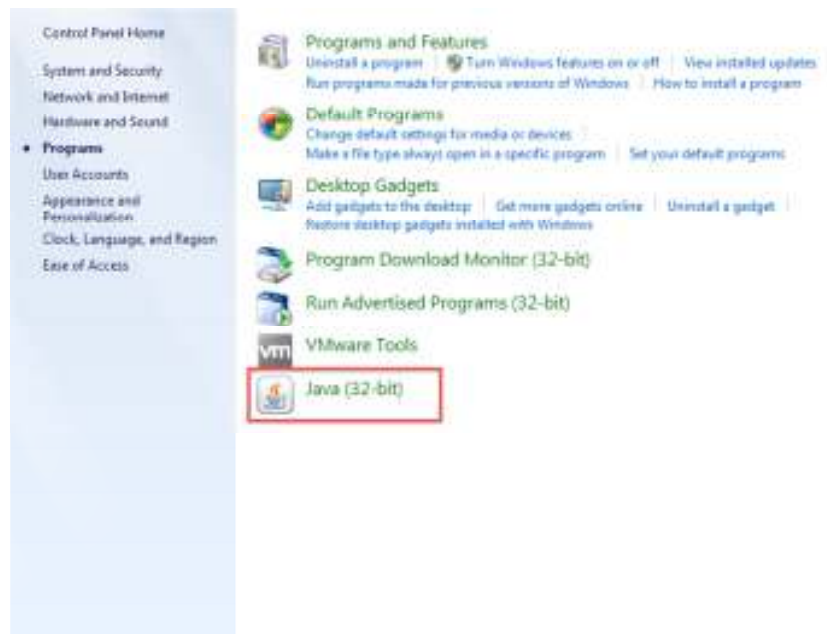


Netrust Digital Signer 3.0	Version: 1.0
	Issue Date: 3 th March 2013

3) Find the “Programs” Icon and click it. If you can't find the icon proceed immediately to step 2a)

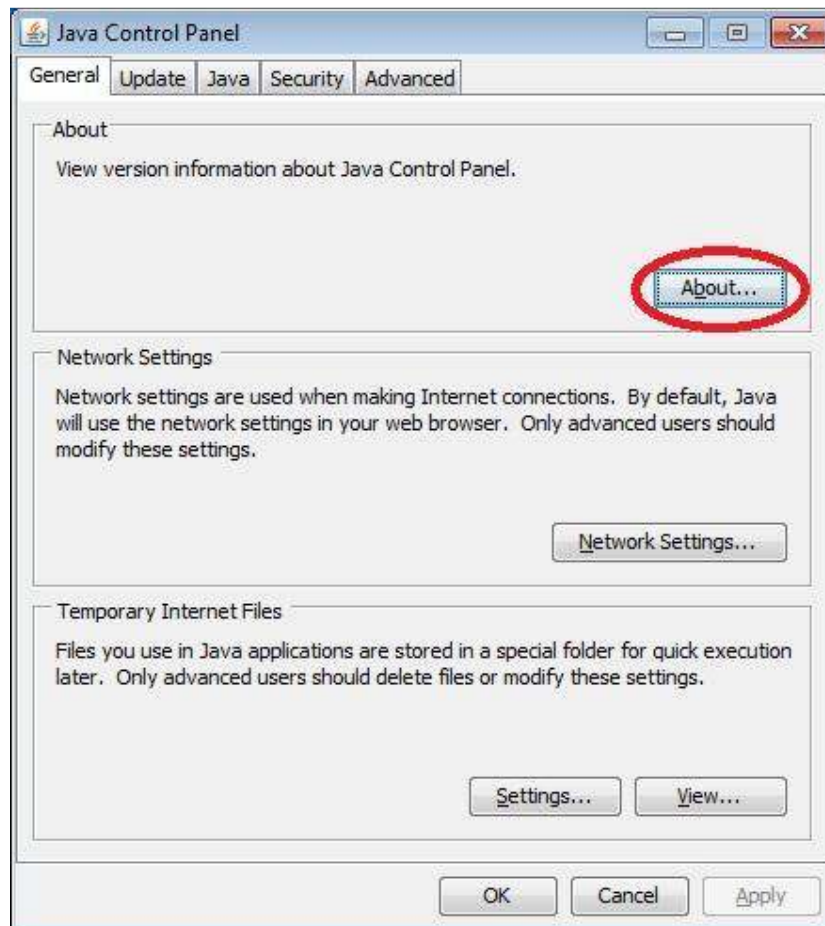


2a) Find and click the “Java (32-bit)” icon



Netrust Digital Signer 3.0	Version: 1.0
	Issue Date: 3 th March 2013

3) Next click the “About...” button from the “General” tab



Netrust Digital Signer 3.0	Version: 1.0
	Issue Date: 3 th March 2013

4) Lastly find the version information beneath the Java icon. For the example below it would “Java version 6 Update 18”.

